



# SOLAR SYSTEM SAFARI

## Dear Educator:

Thank you for choosing to bring your students to the Planetarium.

When you arrive, check in at the box office on the Planetarium level. For payment, you will be required to know the exact number of students and adults in your group.

Store outerwear, lunches, backpacks, etc. in the cloakroom in the lower level. No backpacks in the Planetarium. The Manitoba Museum is not responsible for loss or theft; valuables should be left at home or school.

For further information, please visit our website [www.manitobamuseum.ca](http://www.manitobamuseum.ca) or call 988-0626.

## Visiting the Planetarium

The Planetarium Star Theatre immerses the audience in the darkest night skies, takes us on adventures to other planets and moons or even on a journey inside a living cell.

Our staff will greet you outside the Planetarium, reiterate the rules and seat you in the theatre. Feel free to discuss the expectations with your class prior to arriving at The Manitoba Museum.

## Planetarium Rules

1. Food and drink are not allowed in the Planetarium. No gum, please.
2. Please refrain from talking during the show out of respect for others in the theatre.
3. Please turn off cell phones.
4. Photography is not permitted during the planetarium show.
5. Do not put your feet on your seat, or the seat in front of you, please.

Class control remains the teacher's responsibility.

**Grades:** K to 3

**Clusters:** Daily & Seasonal Changes  
Forces that Attract or Repel

**Duration:** 40 minutes

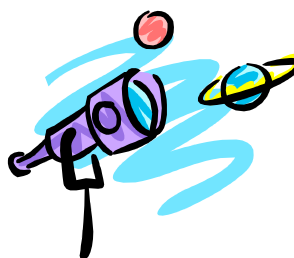
## Program Outline:

Our solar system is filled with characters! Join Danger Dave in the planetarium for a safari through our solar system as he introduces us to each planet, the Moon, Sun and the dwarf planet Pluto. This show addresses and explains the issue of why Pluto is no longer a planet and allows us to look at asteroids, comets and satellites found throughout our solar system.

## Vocabulary

Here is a list of words used during this Planetarium show:

Sun, star, moon, planet, Mercury, Venus, Earth, Mars, Jupiter, Saturn, Uranus, Neptune, dwarf planet, Pluto, asteroid, comet, astronomer, gravity, season.



## SCHOOL PROGRAMS SPONSORED BY

THE  
**Great-West Life**  
ASSURANCE  COMPANY

STRONGER COMMUNITIES TOGETHER™